

Blairstown Environmental Resources Inventory

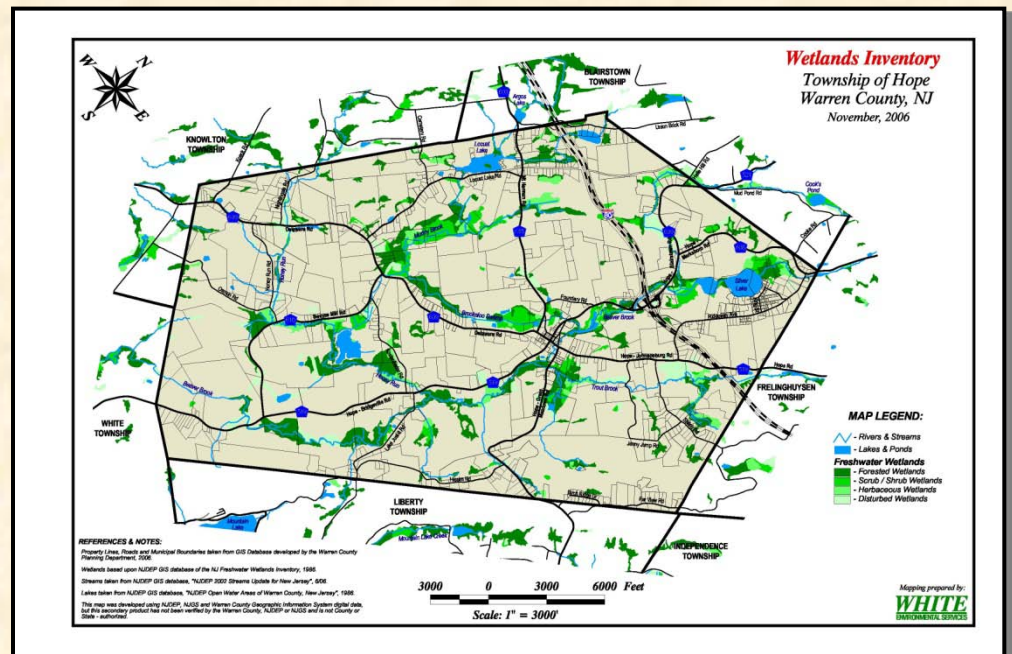
Location: Blairstown Township
Warren County, NJ

Client: Blairstown Twp. Environmental Commission
Roger Gutzwiller, Chairman

Project Description:

Funded by a Grant from the Association of New Jersey Environmental Commissions (ANJEC), the Blairstown Township Environmental Commission hired White Environmental Services to develop a GIS database for the Township's Environmental Resources Inventory (ERI). George White worked with a committee of residents, which included representatives from the Environmental Commission, Open Space Committee and Historic Preservation Committee to develop an outline for the ERI and list of maps to be produced for this document.

Working with AutoCad files of the current Municipal Tax Maps and NJDEP 2002 Aerial Photography, White Environmental Services created a composite parcel map for the Township, which was geo-referenced to State Plane Coordinates. Current Tax Assessor data was then linked to the Parcels to develop a foundation for the new ArcView GIS database. All known, relevant GIS



coverages from various Federal, State and local sources were collected into a central database. If necessary, the data was converted into State Plane Coordinates and trimmed to the limits of the study area. Color schemes and layering were then established for each GIS theme. Using this data, 24 maps were generated for use in the ERI. Upon completion of the project, an interactive GIS presentation using a laptop computer, LED projector and the new ArcView data was given at a public hearing at the Municipal Building. Potential uses of the database were explained to the audience and various applications were demonstrated.

Another goal of the ERI Committee was to train members to use the GIS database on the Township's computer. George trained five members of the Committee to use ArcView during three training sessions. Blairstown Township Environmental Commission is currently maintaining their GIS database and using it in the review of various issues in the municipality. ANJEC has listed the Blairstown ERI on their Web Site as an exceptional example for a Municipal ERI. The Blairstown Environmental Resources Inventory is available on-line on the Township's website at:

www.blairstown-nj.org/environresourceinventory.htm